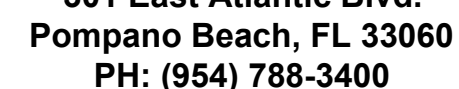
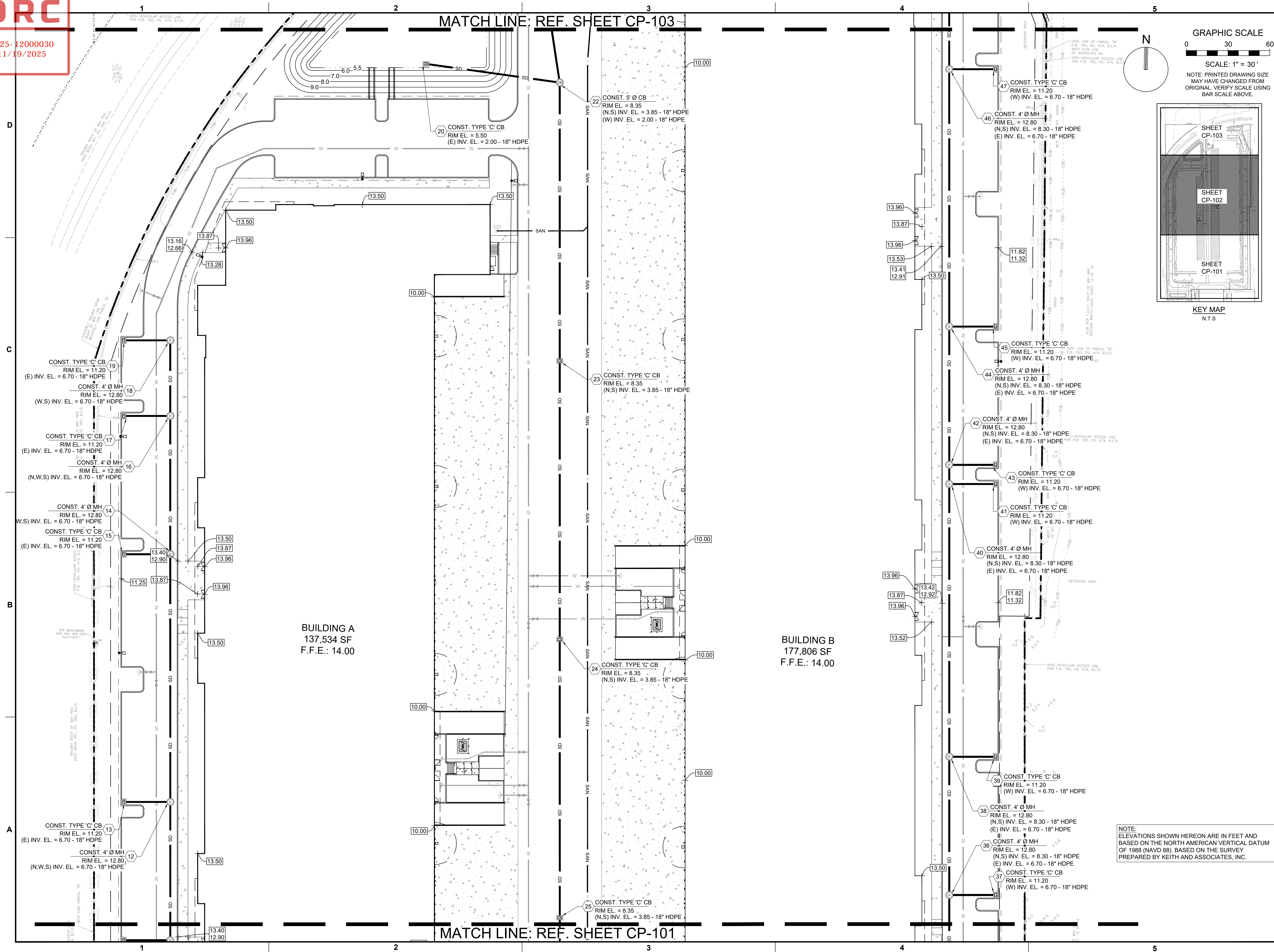


PZ25-12000030
11/19/2025

MATCH LINE: REF. SHEET CP-103

MATCH LINE: REF. SHEET CP-101



Florida Engineering Business License: CA7928
Florida Surveyor and Mapper Business License: LB6860
Florida Landscape Architecture Business License: LC2600045

[illegible]

RESPONSIBILITY FOR THE USE OF THESE PLANS PRIOR TO OBTAINING PERMITS FROM ALL AGENCIES HAVING JURISDICTION OVER THE PROJECT WILL FALL SOLELY UPON THE USER.

ISSUE DATE:	10/15/2025
-------------	------------

DESIGNED BY: _____ BE _____

DRAWN BY: JS

CHECKED BY: NW

BID-CONTRACT:	
----------------------	--

THOMAS F. DONAHUE, P.E.
FLORIDA REG. NO. 60529
(FOR THE FIRM)

CLIENT

**FIRST
INDUSTRIAL**

PROJECT

**FIRST 95 DISTRIBUTION
CENTER- PHASE II
1000-1041 NW 12th Ter.
Pompano Beach, FL**

SHEET TITLE

PAVING, GRADING, AND DRAINAGE PLAN

SHEET **CP-102**
NUMBER

PROJECT NUMBER	10607.14
-------------------	----------

Drawing name: Q:\10607.14 - First Industrial\Engineering\Cadd\10607.14-CP-1XX.dwg

STATIS- PREIMINARY